

PAR-MOVE SERIES - STRONGER THAN EVER!!

NEW
SX119 PRO

PAR-MOVE CONCEPT HIGH PERFORMANCE SUPER-AUTOMATIC TYRE CHANGER WITH DUAL ASSIST ARM AND POWER X



Discover on our website!



5 YEAR WARRANTY ON POWERX, GEARBOX and PAR-MOVE



Lightbulb icon: Suitable for Tubeless tyre bead seating system (optional)



MOTOINVERTER
Faster, more accurate and reliable drive for your tyre changer.

Available in 3ph-2 speed, 1ph-2 speed (inverter) and 1ph - 1 speed version

✓ Robust fixed vertical tower with innovative **parallelogram operating arm [Giuliano Patent]**.

✓ Vertical tower with **built-in air tank**

✓ Tools Storage Box (standard)

✓ Tyre inflation by pedal (standard)

✓ Fitting head designed for both standard and low profiled tyre applications

✓ **Reinforced Chassis.** Fixed vertical tower and parallelogram operating arm [Patented] makes SX119Pro **extremely robust** and stiff, granting **increased rigidity** and eliminating all flexes.



Lightbulb icon: **POWER X** grants double (uniform) clamping power on jaws, and an almost **endless durability** and **reliability** of your turntable!!!

Lightbulb icon: **HP119 Additional auxiliary helper system** (standard) provides a valuable support in mounting/demounting Run Flat, UHP and low profiled tyres.

✓ Tabletop thickness 14 mm with **POWER X** four cylinders clamping system [**Giuliano Patent**].

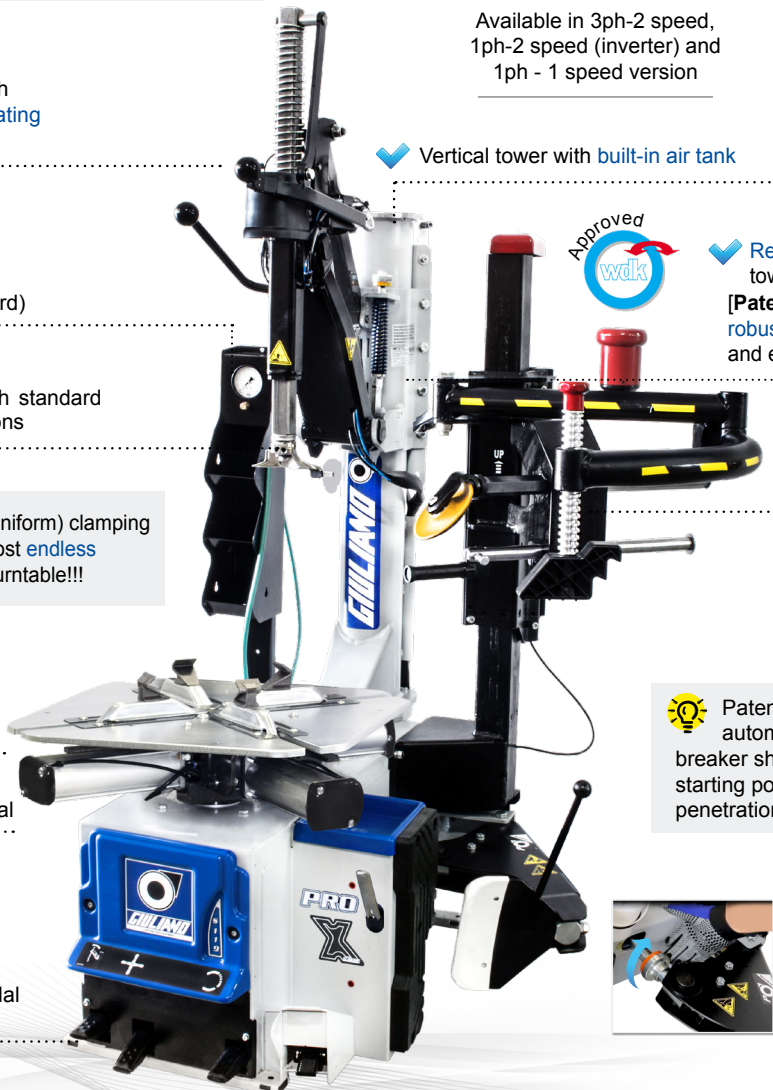
Lightbulb icon: Patented **PO SYSTEM** (standard) automatically moves the bead breaker shovel back to the starting position, after its penetration.

✓ Double rotation speed by pedal

✓ Bead breaker **double effect Cylinder** ø 200 mm.

✓ Adjustable BB shovel stroke. Super-quick and Simple

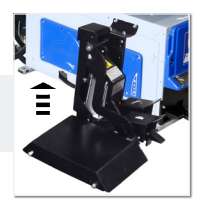
✓ "Easy Access" extractable pedal box for quick service



220V-1ph Inverter

Available in:
● Blue Trim
● Black Trim
● Red Trim

Lightbulb icon: A very practical **Wheel Lifter** reduces effort and increases productivity (optional).



STANDARD FEATURES

Rim clamping from outside	10" - 27"
Rim clamping from inside	12" - 29"
Max. tyre diameter	1100 mm (43")
Max. tyre width	415 mm (16")
Bead breaker cylinder force at 10 Bar	30800 N
Operating pressure	10 Bar (145 Psi)
Power supply	400V-3ph-2 speed 220V-1ph/220V-1ph-2 speed
Motor power	0,8 / 1,1 kW (3 ph)
Rotation speed	7 - 14 rpm
Pre-set tyre inflating pressure	3,5 bar (50 Psi)
Net weight	408 kg
Max. overall dimensions	1390x1350x2170 mm

STANDARD ACCESSORIES



EXTENSIVE SELECTION OF STANDARD ACCESSORIES

Bead lifting lever ● Lube paste bucket and Brush ● Plastic protectors for mounting/demounting tool ● 2 Protectors for bead breaker shovel ● Jaw protectors for alloy rims ● Lubricator + Pressure regulator ● Bucket support

NEW

SX119 PRO LNL



PAR-MOVE CONCEPT HIGH PERFORMANCE SUPER-AUTOMATIC LEVER - NO LEVER TYRE CHANGER WITH DUAL ASSIST ARM AND POWER X



Suitable for Tubeless tyre bead seating system (optional)



MOTOINVERTER
Faster, more accurate and reliable drive for your tyre changer.



Discover on our website!



5 YEAR WARRANTY ON POWERX, GEARBOX and PAR-MOVE

✓ Robust fixed vertical tower with innovative **parallelogram operating arm [Giuliano Patent]**.

✓ **Lever-No-Lever** tyre mounting/demounting system [Giuliano Patent], (standard).



"LEVER" MODE



"NO LEVER" MODE

✓ Tyre inflation by pedal and Tools Storage Box (standard)

✓ Double rotation speed by pedal

✓ Tabletop thickness 14 mm with **POWERX** four cylinders clamping system [Giuliano Patent].

✓ Bead breaker **double effect Cylinder** ø 200 mm.

✓ "Easy Access" extractable pedal box for quick service

✓ Vertical tower with **built-in air tank**



✓ **Reinforced Chassis.** Fixed vertical tower and parallelogram operating arm [Patented] makes SX119Pro LNL extremely robust and stiff, granting increased rigidity and eliminating all flexes.

HP119 Additional auxiliary helper system (standard) provides a valuable support in mounting/demounting Run Flat, UHP and low profiled tyres.

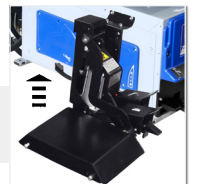
Patented **PO SYSTEM** (standard) automatically moves the bead breaker shovel back to the starting position, after its penetration.



✓ Adjustable BB shovel stroke. Super-quick and Simple



A very practical **Wheel Lifter** reduces effort and increases productivity (optional).



220V-1ph Inverter

Available in:
● Blue Trim
● Black Trim
● Red Trim

STANDARD FEATURES

Rim clamping from outside	10" - 27"
Rim clamping from inside	12" - 29"
Max. tyre diameter	1100 mm (43")
Max. tyre width	415 mm (16")
Bead breaker cylinder force at 10 Bar	30800 N
Operating pressure	10 Bar (145 Psi)
Power supply	400V-3ph-2 speed 220V-1ph/220V-1ph-2 speed
Motor power	0,8 / 1,1 kW (3 ph)
Rotation speed	7 - 14 rpm
Pre-set tyre inflating pressure	3,5 bar (50 Psi)
Net weight	428 kg
Max. overall dimensions	1390x1350x2170 mm

STANDARD ACCESSORIES



EXTENSIVE SELECTION OF STANDARD ACCESSORIES

Bead lifting lever ● Lube paste bucket and Brush ● Plastic protectors for LNL mounting/demounting tool ● 2 Protectors for bead breaker shovel ● Jaw protectors for alloy rims ● Lubricator + Pressure regulator ● Bucket support

PAR-MOVE SERIES - STRONGER THAN EVER!!

NEW

S119 PRO CP



PAR-MOVE CONCEPT HIGH PERFORMANCE SUPER-AUTOMATIC CENTER POST TYRE CHANGER WITH DUAL ASSIST ARM



5 YEAR WARRANTY ON GEARBOX and PAR-MOVE



S119 PRO CP

www.giuliano-automotive.com



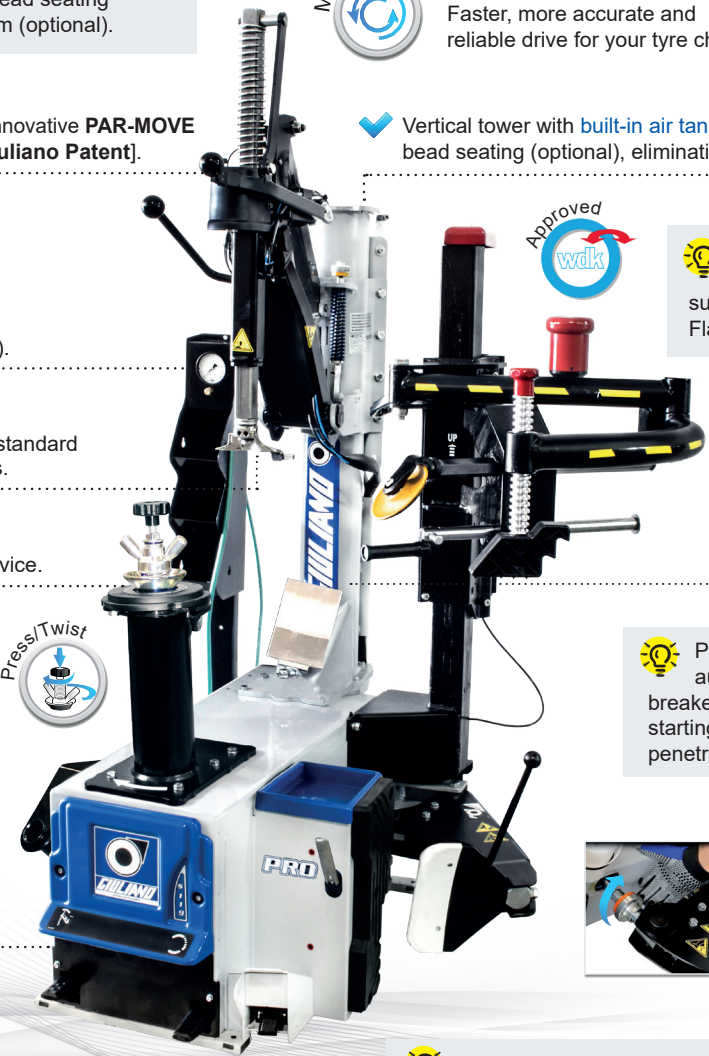
Suitable for Tubeless tyre bead seating system (optional).



MOTOINVERTER
Faster, more accurate and reliable drive for your tyre changer.

Available in 3ph-2 speed, 1ph-2 speed (inverter) and 1ph - 1 speed version

- ✓ Robust fixed vertical tower with innovative **PAR-MOVE parallelogram operating arm** [Giuliano Patent].
- ✓ Vertical tower with **built-in air tank**, provides tubeless tyre inflation and bead seating (optional), eliminating the need for a separate air tank.
- ✓ Tools Storage Box (standard).
- ✓ Tyre inflation by pedal (standard).
- ✓ Fitting head designed for both standard and low profiled tyre applications.
- ✓ Manual **Press/Twist** clamping device.
- ✓ Double rotation speed by pedal.
- ✓ Bead breaker **double effect Cylinder** ø 200 mm.
- ✓ "Easy Access" **extractable pedal box** for quick service.
- ✓ **Approved wdk**
- ✓ **HP119 Additional auxiliary helper system** provides a valuable support in mounting/demounting Run Flat, UHP and low profiled tyres.
- ✓ **Reinforced Chassis**. Fixed vertical tower and parallelogram operating arm [Patented] makes S119Pro CP **extremely robust** and stiff, granting **increased rigidity** and eliminating all flexes.
- ✓ **Patented PO SYSTEM** (standard) automatically moves the bead breaker shovel back to the starting position, after its penetration.
- ✓ **Adjustable BB shovel stroke**. Super-quick and Simple.



220V-1ph Inverter

Available in:
● Blue Trim
● Black Trim
● Red Trim

A very practical **Wheel Lifter** reduces effort and increases productivity (optional).



STANDARD FEATURES

Rim clamping range	12" - 30"
Max. tyre diameter	1100 mm (43")
Max. tyre width	390 mm (15") *
Bead breaker cylinder force at 10 Bar	30800 N
Operating pressure	10 Bar (145 Psi)
Power supply	220V - 1ph - Inverter (STND) 400V - 3ph, 2 speed, 110V - 1ph (OPT)
Motor power	0,75 kW (2 speed)
Rotation speed	7 - 16 rpm
Pre-set tyre inflating pressure	3,5 Bar (50 Psi)
Net weight	395 kg
Max. overall dimensions	1390 x 1310 x 2170 mm

* For reverse mounted wheels, variable according to rim features

STANDARD ACCESSORIES



EXTENSIVE SELECTION OF STANDARD ACCESSORIES

- Bead lifting lever ● Lube paste bucket and Brush ● Plastic protectors for mounting/demounting tool ● 2 Protectors for bead breaker shovel ● Lubricator + Pressure regulator ● Bucket support ● Mounting Head ● Press/Twist clamping device ● 2 Plastic protections for clamping device ● 2 Rubber protections for clamping chuck and driving pin ● Reduction ring for clamping chuck

TYRE-CHANGERS - PAR-MOVE CONCEPT

PAR-MOVE SERIES - STRONGER THAN EVER!!

NEW

S119 PRO CP LNL



PAR-MOVE CONCEPT HIGH PERFORMANCE SUPER-AUTOMATIC CENTER POST LEVER - NO LEVER TYRE CHANGER WITH DUAL ASSIST ARM



Suitable for **Tubeless** tyre bead seating system (optional).



5 YEAR WARRANTY ON GEARBOX and PAR-MOVE



S119 PRO CP LNL

www.giuliano-automotive.com

Robust fixed vertical tower with innovative **PAR-MOVE parallelogram operating arm [Giuliano Patent]**.

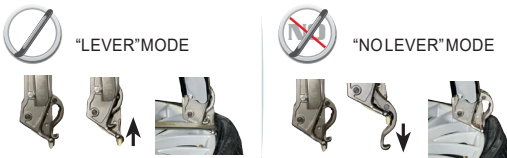
LNL SYSTEM [Giuliano Patent] can work either with or without bead lifting lever (standard).



MOTOINVERTER
Faster, more accurate and reliable drive for your tyre changer.

Available in 3ph-2 speed, 1ph-2 speed (inverter) and 1ph - 1 speed version

Vertical tower with **built-in air tank**, provides tubeless tyre inflation and bead seating (optional), eliminating the need for a separate air tank.



HP119 Additional auxiliary helper system provides a valuable support in mounting/demounting Run Flat, UHP and low profiled tyres.

Tyre inflation by pedal and Tools Storage Box (standard).

Manual **Press/Twist** clamping device.

Double rotation speed by pedal



Bead breaker **double effect** Cylinder \varnothing 200 mm.

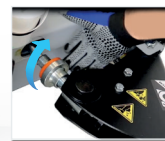
"Easy Access" **extractable** pedal box for quick service.

Reinforced Chassis.
Fixed vertical tower and parallelogram operating arm [Patented] makes S119Pro CP LNL **extremely robust** and stiff, granting **increased rigidity** and eliminating all flexes.

Patented **PO SYSTEM** (standard) automatically moves the bead breaker shovel back to the starting position, after its penetration.



Adjustable BB shovel stroke. Super-quick and Simple.



220V-1ph Inverter

Available in:
● Blue Trim
● Black Trim
● Red Trim

A very practical **Wheel Lifter** reduces effort and increases productivity (optional).



STANDARD FEATURES

Rim clamping range	12" - 30"
Max. tyre diameter	1100 mm (43")
Max. tyre width	390 mm (15") *
Bead breaker cylinder force at 10 Bar	30800 N
Operating pressure	10 Bar (145 Psi)
Power supply	220V - 1ph - Inverter (STND) 400V - 3ph, 2 speed, 110V - 1ph (OPT)
Motor power	0,75 kW (2 speed)
Rotation speed	7 - 16 rpm
Pre-set tyre inflating pressure	3,5 Bar (50 Psi)
Net weight	415 kg
Max. overall dimensions	1390 x 1310 x 2170 mm

* For reverse mounted wheels, variable according to rim features

STANDARD ACCESSORIES



EXTENSIVE SELECTION OF STANDARD ACCESSORIES

● Bead lifting lever ● Lube paste bucket and Brush ● Plastic protectors for LNL mounting/demounting tool ● 2 Protectors for bead breaker shovel ● Lubricator + Pressure regulator ● Bucket support ● Press/Twist clamping device ● 2 Plastic protections for clamping device ● 2 Rubber protections for clamping chuck and driving pin ● Reduction ring for clamping chuck

PAR-MOVE SERIES - STRONGER THAN EVER!!

NEW
SX119 PRO DUO

PAR-MOVE CONCEPT HIGH PERFORMANCE SUPER-AUTOMATIC TYRE CHANGER WITH COMBINED TWO ASSIST ARMS AND POWER X



Discover on our website!



Suitable for Tubeless tyre bead seating system (optional)



MOTOINVERTER
Faster, more accurate and reliable drive for your tyre changer.

Available in 3ph-2 speed, 1ph-2 speed (inverter) and 1ph - 1 speed version



5 YEAR WARRANTY ON POWERX, GEARBOX and PAR-MOVE

✓ Robust fixed vertical tower with innovative **parallelogram operating arm [Giuliano Patent]**.

✓ Tyre inflation by pedal and Tools Storage Box (standard)

✓ Vertical tower with **built-in air tank**

BP1 PLUS [Giuliano Patent] lifts up automatically at the end of the mounting procedure, and moves back in rest position, with no need for the operator to change his working position (standard).



✓ **Reinforced Chassis.** Fixed vertical tower and parallelogram operating arm **[Patented]** makes SX119 PRO DUO **extremely robust** and stiff, granting **increased rigidity** and eliminating all flexes.

✓ Fitting head designed for both standard and low profiled tyre applications

HP119 Additional auxiliary helper system (standard) provides a valuable support in mounting/demounting Run Flat, UHP and low profiled tyres.

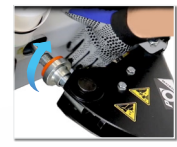
POWERX grants double (uniform) clamping power on jaws, and an almost **endless durability** and **reliability** of your turntable!!!

Patented **PO SYSTEM** (standard) automatically moves the bead breaker shovel back to the starting position, after its penetration.

✓ Tabletop thickness 14 mm with **POWERX** four cylinders clamping system **[Giuliano Patent]**.



✓ Double rotation speed by pedal



✓ Adjustable BB shovel stroke. Super-quick and Simple

✓ "Easy Access" extractable pedal box for quick service

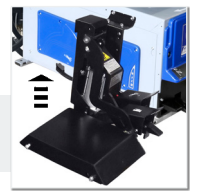
✓ Bead breaker **double effect Cylinder** ø 200 mm.



220V-1ph Inverter

Available in:
● Blue Trim
● Black Trim
● Red Trim

A very practical **Wheel Lifter** reduces effort and increases productivity (optional).



STANDARD FEATURES

Rim clamping from outside	10" - 27"
Rim clamping from inside	12" - 29"
Max. tyre diameter	1100 mm (43")
Max. tyre width	415 mm (16")
Bead breaker cylinder force at 10 Bar	30800 N
Operating pressure	10 Bar (145 Psi)
Power supply	400V-3ph-2 speed 220V-1ph/220V-1ph-2 speed
Motor power	0,8 / 1,1 kW (3 ph)
Rotation speed	7 - 14 rpm
Pre-set tyre inflating pressure	3,5 bar (50 Psi)
Net weight	432 kg
Max. overall dimensions	1750x1350x2170 mm

STANDARD ACCESSORIES



EXTENSIVE SELECTION OF STANDARD ACCESSORIES

Bead lifting lever ● Lube paste bucket and Brush ● Plastic protectors for mounting/demounting tool ● 2 Protectors for bead breaker shovel ● Jaw protectors for alloy rims ● Lubricator + Pressure regulator ● Bucket support

NEW

SX119 PRO DUO LNL



PAR-MOVE CONCEPT HIGH PERFORMANCE SUPER-AUTOMATIC LEVER - NO LEVER TYRE CHANGER WITH COMBINED TWO ASSIST ARMS AND POWER X



Discover on our website!



Suitable for Tubeless tyre bead seating system (optional)



MOTOINVERTER

Faster, more accurate and reliable drive for your tyre changer.



5 YEAR WARRANTY ON POWERX, GEARBOX and PAR-MOVE

Available in 3ph-2 speed, 1ph-2 speed (inverter) and 1ph - 1 speed version

Robust fixed vertical tower with innovative **parallelogram operating arm [Giuliano Patent]**.

Tyre inflation by pedal and Tools Storage Box (standard)

Vertical tower with **built-in air tank**, provides tubeless tyre inflation and bead seating (optional), eliminating the need for a separate air tank.

BP1 PLUS pneumatic bead pressing arm [Giuliano Patent] lifts up automatically at the end of the mounting procedure, and moves back in rest position, with no need for the operator to change his working position (standard).

Lever-No-Lever tyre mounting/demounting system [Giuliano Patent], (standard).



Reinforced Chassis. Fixed vertical tower and parallelogram operating arm [Patented] makes SX119Pro DUO LNL **extremely robust** and stiff, granting increased rigidity and eliminating all flexes.

HP119 Additional auxiliary helper system (standard) provides a valuable support in mounting/demounting Run Flat, UHP and low profiled tyres.

Tabletop thickness 14 mm with **POWERX** four cylinders clamping system [Giuliano Patent].

Patented **PO SYSTEM** (standard) automatically moves the bead breaker shovel back to the starting position, after its penetration.

Double rotation speed by pedal

Adjustable BB shovel stroke. Super-quick and Simple

"Easy Access" extractable pedal box for quick service

Bead breaker double effect Cylinder \varnothing 200 mm.

A very practical **Wheel Lifter** reduces effort and increases productivity (optional).



220V-1ph Inverter

Available in:
 Blue Trim
 Black Trim
 Red Trim

STANDARD FEATURES

Rim clamping from outside	10" - 27"
Rim clamping from inside	12" - 29"
Max. tyre diameter	1100 mm (43")
Max. tyre width	415 mm (16")
Bead breaker cylinder force at 10 Bar	30800 N
Operating pressure	10 Bar (145 Psi)
Power supply	400V-3ph-2 speed 220V-1ph/220V-1ph-2 speed
Motor power	0,8 / 1,1 kW (3 ph)
Rotation speed	7 - 14 rpm
Pre-set tyre inflating pressure	3,5 bar (50 Psi)
Net weight	452 kg
Max. overall dimensions	1750x1350x2170 mm

STANDARD ACCESSORIES



EXTENSIVE SELECTION OF STANDARD ACCESSORIES

Bead lifting lever • Lube paste bucket and Brush • Plastic protectors for LNL mounting/demounting tool • 2 Protectors for bead breaker shovel • Jaw protectors for alloy rims • Lubricator + Pressure regulator • Bucket support

PAR-MOVE SERIES - STRONGER THAN EVER!!

NEW

S119 PRO DUO CP



PAR-MOVE CONCEPT HIGH PERFORMANCE SUPER-AUTOMATIC CENTER POST TYRE CHANGER WITH COMBINED TWO ASSIST ARMS



Suitable for **Tubeless** tyre bead seating system (optional).



5 YEAR WARRANTY ON GEARBOX and PAR-MOVE



S119 PRO DUO CP

www.giuliano-automotive.com



MOTOINVERTER

Faster, more accurate and reliable drive for your tyre changer.

Available in 3ph-2 speed, 1ph-2 speed (inverter) and 1ph - 1 speed version

- Robust fixed vertical tower with innovative **PAR-MOVE parallelogram operating arm [Giuliano Patent]**.

- Vertical tower with **built-in air tank**, provides tubeless tyre inflation and bead seating (optional), eliminating the need for a separate air tank.

BP1 PLUS pneumatic bead pressing arm [Giuliano Patent] lifts up automatically at the end of the mounting procedure, and moves back in rest position, with no need for the operator to change his working position (standard).

- Reinforced Chassis**. Fixed vertical tower and parallelogram operating arm [Patented] makes S119Pro DUO CP **extremely robust** and stiff, granting **increased rigidity** and eliminating all flexes.

- Fitting head designed for both standard and low profiled tyre applications.

- Manual **Press/Twist** clamping device.

- Double rotation speed by pedal.



- Tyre inflation by pedal and Tools Storage Box (standard).

- Bead breaker **double effect Cylinder** ø 200 mm.

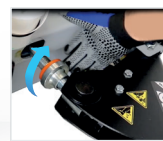
- "Easy Access" **extractable** pedal box for quick service.

HP119 Additional auxiliary helper system (standard) provides a valuable support in mounting/demounting Run Flat, UHP and low profiled tyres.

Patented **PO SYSTEM** (standard) automatically moves the bead breaker shovel back to the starting position, after its penetration.



- Adjustable BB shovel stroke. Super-quick and Simple.



A very practical **Wheel Lifter** reduces effort and increases productivity (optional).



220V-1ph Inverter

Available in:
 ● Blue Trim
 ● Black Trim
 ● Red Trim

STANDARD FEATURES

Rim clamping range	12" - 30"
Max. tyre diameter	1100 mm (43")
Max. tyre width	390 mm (15")*
Bead breaker cylinder force at 10 Bar	30800 N
Operating pressure	10 Bar (145 Psi)
Power supply	220V - 1ph - Inverter (STND)
Motor power	400V - 3ph, 2 speed, 110V - 1ph (OPT)
Rotation speed	0,75 kW (2 speed)
Pre-set tyre inflating pressure	7 - 16 rpm
Net weight	3,5 Bar (50 Psi)
Max. overall dimensions	420 kg
	1750 x 1310 x 2170 mm

* For reverse mounted wheels, variable according to rim features

STANDARD ACCESSORIES



EXTENSIVE SELECTION OF STANDARD ACCESSORIES

● Bead lifting lever ● Lube paste bucket and Brush ● Plastic protectors for mounting/demounting tool ● 2 Protectors for bead breaker shovel ● Lubricator + Pressure regulator ● Bucket support ● Press/Twist clamping device ● 2 Plastic protections for clamping device ● 2 Rubber protections for clamping chuck and driving pin ● Reduction ring for clamping chuck

PAR-MOVE SERIES - STRONGER THAN EVER!!

NEW

S119 PRO DUO CP LNL



PAR-MOVE CONCEPT HIGH PERFORMANCE SUPER-AUTOMATIC CENTER POST LEVER - NO LEVER TYRE CHANGER WITH COMBINED TWO ASSIST ARMS



Suitable for **Tubeless** tyre bead seating system (optional).



5 YEAR WARRANTY ON GEARBOX and PAR-MOVE



S119 PRO DUO CP LNL

www.giuliano-automotive.com



MOTOINVERTER

Faster, more accurate and reliable drive for your tyre changer.

Available in 3ph-2 speed, 1ph-2 speed (inverter) and 1ph - 1 speed version

Robust fixed vertical tower with innovative **PAR-MOVE parallelogram operating arm [Giuliano Patent]**.

BP1 PLUS pneumatic bead pressing arm [Giuliano Patent] lifts up automatically at the end of the mounting procedure, and moves back in rest position, with no need for the operator to change his working position (standard).

Vertical tower with **built-in air tank**, provides tubeless tyre inflation and bead seating (optional), eliminating the need for a separate air tank.

Lever-No-Lever tyre mounting/demounting system [Giuliano Patent], (standard).

Reinforced Chassis. Fixed vertical tower and parallelogram operating arm [Patented] makes S119Pro DUO CP LNL **extremely robust** and stiff, granting **increased rigidity** and eliminating all flexes.



Manual **Press/Twist** clamping device.

Bead breaker **double effect Cylinder** ø 200 mm.



Double rotation speed by pedal.

Tyre inflation by pedal and **Tools Storage Box** (standard).

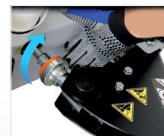
"Easy Access" **extractable** pedal box for quick service.

HP119 Additional auxiliary helper system (standard) provides a valuable support in mounting/demounting Run Flat, UHP and low profiled tyres.

Patented **PO SYSTEM** (standard) automatically moves the bead breaker shovel back to the starting position, after its penetration.



Adjustable BB shovel stroke. Super-quick and Simple.



220V-1ph Inverter

Available in:
● Blue Trim
● Black Trim
● Red Trim

A very practical **Wheel Lifter** reduces effort and increases productivity (optional).



STANDARD FEATURES

Rim clamping range	12" - 30"
Max. tyre diameter	1100 mm (43")
Max. tyre width	390 mm (15") *
Bead breaker cylinder force at 10 Bar	30800 N
Operating pressure	10 Bar (145 Psi)
Power supply	220V - 1ph - Inverter (STND) 400V - 3ph, 2 speed, 110V - 1ph (OPT)
Motor power	0,75 kW (2 speed)
Rotation speed	7 - 16 rpm
Pre-set tyre inflating pressure	3,5 Bar (50 Psi)
Net weight	440 kg
Max. overall dimensions	1750 x 1310 x 2170 mm

* For reverse mounted wheels, variable according to rim features

STANDARD ACCESSORIES



EXTENSIVE SELECTION OF STANDARD ACCESSORIES

● Bead lifting lever ● Lube paste bucket and Brush ● Plastic protectors for LNL mounting/demounting tool ● 2 Protectors for bead breaker shovel ● Lubricator + Pressure regulator ● Bucket support ● Press/Twist clamping device ● 2 Rubber protections for clamping chuck and driving pin ● Reduction ring for clamping chuck



5121



PAR-MOVE CONCEPT CENTER POST LEVER - NO LEVER TYRE CHANGER WITH BEAD BREAKER DISKS



Suitable for Tubeless tyre bead seating system (optional)



MOTOINVERTER

Faster, more accurate and reliable drive for your tyre changer.



5 YEAR WARRANTY ON GEARBOX and PAR-MOVE

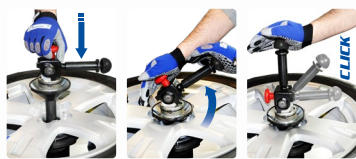
✓ Robust fixed vertical tower with innovative **parallelogram operating arm [Giuliano Patent]**.

✓ Equipped with **BP1 PLUS** bead pressing arm (standard), complete with self-storage function **[Giuliano Patent]**

✓ Vertical tower with **built-in air tank**

✓ Tools Storage Box (standard)

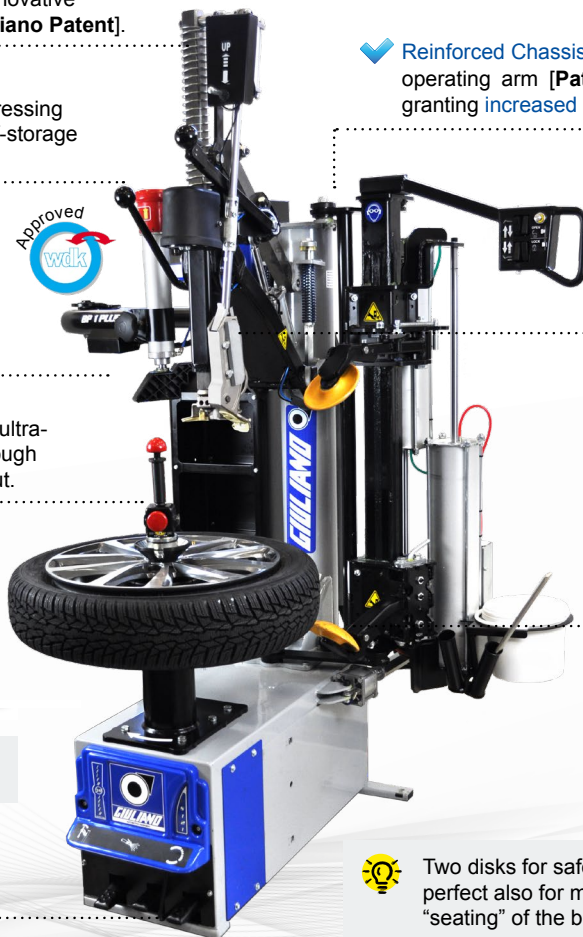
✓ **SMART LOCK [Giuliano Patent]** ultra-quick wheel clamping system, through cone and shaft with Smart Lock nut.



Less than **2 seconds** to have a perfect rim clamping.

✓ Tyre inflation by pedal (standard)

✓ Double rotation speed by pedal (motoinverter)



✓ **Reinforced Chassis.** Fixed vertical tower and parallelogram operating arm **[Patented]** makes S121 **extremely robust** and stiff, granting **increased rigidity** and eliminating all flexes.

✓ Operated by pedal and control console

✓ **Lever-No-Lever** tyre mounting / demounting system **[Giuliano Patent]**, (standard).



✓ Double arm/disk air operated bead breaker system

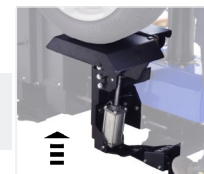
Bead breaker disks are slightly but purposely misaligned with the rim center for a better and faster penetration and immediate bead loosening, **Center Driven Concept [Giuliano Patent]**

Two disks for safe and fast bead breaking, perfect also for match-mounting and "seating" of the bead in its position.



✓ "Easy Access" extractable pedal box for quick service

A very practical **Wheel Lifter** reduces effort and increases productivity (optional).



220V-1ph Inverter

Available in:
 ● Blue Trim
 ● Black Trim
 ● Red Trim

STANDARD FEATURES

Rim clamping range	12" - 30"
Max. tyre diameter	1200 mm (47")
Max. tyre width	406 mm (16") *
Bead breaker cylinder force at 10 Bar	11770 N (1200 kg)
Max. wheel weight	80 kg
Operating pressure	8-10 bar (116 - 145 Psi)
Power supply	220V - 1ph
Motor power	0,75 kW - 2 speed
Rotation speed	7 - 16 rpm
Pre-set tyre inflating pressure	3,5 bar (50 Psi)
Net weight	365 kg
Max. overall dimensions	1120-1690x1280x1770-2200 mm

* For reverse mounted wheels, variable according to rim features

STANDARD ACCESSORIES



EXTENSIVE SELECTION OF STANDARD ACCESSORIES

● Bead lifting lever ● Lube paste bucket and Brush ● Plastic tyre lever ● Plastic protectors for QX mounting/demounting tool ● 2 Plastic protections for Smart Lock centering cone ● 2 Rubber protections for clamping chuck and driving pin ● Reduction ring for clamping chuck ● Plastic bead pressing clamp ● Set of rubber protectors ● Adjustment knob for Smart Lock ● Plastic cone Ø 70 mm ● Spare O rings for Smart Lock ● Air lubricator, air filter/water trap ● Work gloves



S122



5 YEAR WARRANTY ON GEARBOX and PAR-MOVE

PAR-MOVE CONCEPT CENTER POST LEVER - NO LEVER TYRE CHANGER WITH DUAL BEAD BREAKER SYSTEM



Suitable for Tubeless tyre bead seating system (optional)



MOTOINVERTER

Faster, more accurate and reliable drive for your tyre changer.

✓ Robust fixed vertical tower with innovative **parallelogram operating arm [Giuliano Patent]**.

✓ **BP1 PLUS** bead pressing arm (standard), complete with self-storage function **[Giuliano Patent]**

✓ Vertical tower with **built-in air tank**

✓ Tools Storage Box (standard)

✓ Tyre inflation by pedal (standard)

✓ **SMART LOCK [Giuliano Patent]** ultra-quick wheel clamping system, through cone and shaft with Smart Lock nut.



Less than **2 seconds** to have a perfect rim clamping.

✓ Double rotation speed by pedal (motoinverter)

✓ "Easy Access" extractable pedal box for quick service

A very practical **Wheel Lifter** reduces effort and increases productivity (optional).



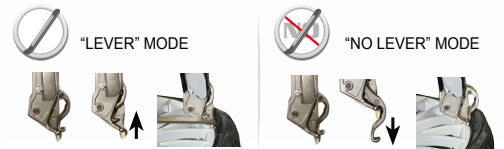
220V-1ph Inverter

Available in:
 ● Blue Trim
 ● Black Trim
 ● Red Trim

✓ **Reinforced Chassis.** Fixed vertical tower and parallelogram operating arm **[Patented]** makes S122 **extremely robust** and stiff, granting **increased rigidity** and eliminating all flexes.

✓ Operated by pedal and control console

✓ **Lever-No-Lever** tyre mounting / demounting system [Giuliano Patent], (standard).



✓ Dual bead breaker system with air operated double arm/disk and bead breaker shovel.

Bead breaker disks are slightly but purposely misaligned with the rim center for a better and faster penetration and immediate bead loosening, **Center Driven Concept [Giuliano Patent]**



✓ Fixed **roller plate**, to ease bead breaking of heavy wheels, (standard).

✓ **SMART BLADE SYSTEM [Giuliano Patent]** for BB shovel travel memory. Adjustable bead breaker shovel angle.



Total bead breaker movement can be **set and kept** for a **whole set of 4 tyres**, while operator won't have to use hands to help bead breaker, working in a **quicker and safer way!**

STANDARD FEATURES

Rim clamping range	12" - 30"
Max. tyre diameter	1200 mm (47")
Max. tyre width	406 mm (16") *
Disks bead breaker cylinder force at 10 Bar	11770 N (1200 kg)
Shovel bead breaker cylinder force at 10 Bar	30800 N (3140 kg)
Max. wheel weight	80 kg
Operating pressure	8-10 bar (116 - 145 Psi)
Power supply	220V - 1ph
Motor power	0,75 kW - 2 speed
Rotation speed	7 - 16 rpm
Pre-set tyre inflating pressure	3,5 bar (50 Psi)
Net weight	445 kg
Max. overall dimensions	1760x1280x1770-2200 mm

* For reverse mounted wheels, variable according to rim features

STANDARD ACCESSORIES



EXTENSIVE SELECTION OF STANDARD ACCESSORIES

- Bead lifting lever ● Lube paste bucket and Brush ● Plastic tyre lever ● Plastic protectors for QX mounting/demounting tool ● 2 Plastic protections for Smart Lock centering cone ● 2 Rubber protections for clamping chuck and driving pin ● Reduction ring for clamping chuck ● Plastic bead pressing clamp ● Set of rubber protectors ● Adjustment knob for Smart Lock ● Plastic cone Ø 70 mm ● Spare O rings for Smart Lock ● Air lubricator, air filter/water trap ● Work gloves ● 2 Protectors for bead breaker shovel



PAR-MOVE SERIES - STRONGER THAN EVER!!

NEW

T-REC PRO



SUPER-AUTOMATIC ELECTRO-HYDRAULIC LEVERLESS TYRE CHANGER, PAR MOVE CONCEPT, WITH FULLY AUTOMATED BEAD-LOOSENING / TYRE-DEMOUNTING CYCLE

✓ Automatic procedure for bead loosening and tyre demounting, selectable according to tyre type and wheel type.

✓ Robust fixed vertical tower with innovative **PAR-MOVE parallelogram operating arm [Giuliano Patent]**. Vertical tower with **built-in air tank**.

✓ Equipped with **BP1 PLUS** bead pressing arm (standard), complete with self-storage function [Giuliano Patent].

✓ **Leverless** tyre mounting/demounting system [Giuliano Patent], standard.

✓ **Laser pointer** for positioning leverless tool.

✓ Hybrid (air + mechanical) wheel clamping system ensures perfect wheel clamping.

✓ Center Clamp Chuck rotation by **motoinverter** or **hydraulic**.

💡 A very practical **Wheel Positioner** reduces effort and increases productivity (standard).

✓ Already Pre-Set for **INDUSTRIA 4.0**. Archive and Data Base of all tyre application operations.



MOTOINVERTER

Faster, more accurate and reliable drive for your tyre changer.

STANDARD FEATURES

Rim clamping range	12" - 30"
Max. tyre diameter	1200 mm (47")
Max. tyre width	406 mm (16") *
Bead breaker cylinder force at 10 Bar	11770 N (1200 kg)
Max. wheel weight	80 kg
Operating pressure	8-10 bar (116 - 145 Psi)
Power supply	220V - 1ph
Motor power	0,75 kW - 2 speed
Rotation speed	7 - 16 rpm
Pre-set tyre inflating pressure	3,5 bar (50 Psi)
Net weight	649 kg
Max. overall dimensions	1120-1690x1600x1900-2400 mm

* For reverse mounted wheels, variable according to rim features

YouTube

Watch the video



5 YEAR WARRANTY ON GEARBOX and PAR-MOVE



www.giuliano-automotive.com



Through **exclusive GIULIANO "i-REC" self-learning technology**, T-REC tyre changer can **preset** working cycles according to operator's experience, combining **automation** speed with professional expertise.

✓ Chance to manually interrupt and modify automatic cycle, even during it, without RESET.

✓ **Interactive Touch Screen 10"** monitor for fast working operations selection.

✓ **"Tyre Set"** function to replicate the same procedure on the whole set of tyres.

✓ Ergonomic and user-friendly control console; double working mode: **automatic** or **manual**.



✓ Double arm/disk **hydraulic** operated bead breaker system.



✓ Tyre inflation by pedal (standard).

✓ Designed, built and engineered in Italy.

✓ Start / Stop pedal for **automatic cycle**.



💡 Bead breaker disks are slightly but purposely misaligned with the rim center for a better and faster penetration and immediate bead loosening, **Center Driven Concept [Giuliano Patent]**.



STANDARD ACCESSORIES



EXTENSIVE SELECTION OF STANDARD ACCESSORIES

- Bead lifting lever • Lube paste bucket and Brush • Plastic tyre lever • Plastic protectors for LNL mounting/demounting tool • 2 Plastic protections for centering cone • 2 Rubber protections for clamping chuck and driving pin • Reduction ring for clamping chuck • Plastic bead pressing clamp • Set of rubber protectors • Plastic cone Ø 70 mm • Air lubricator, air filter/water trap • Work gloves

100% MADE IN ITALY

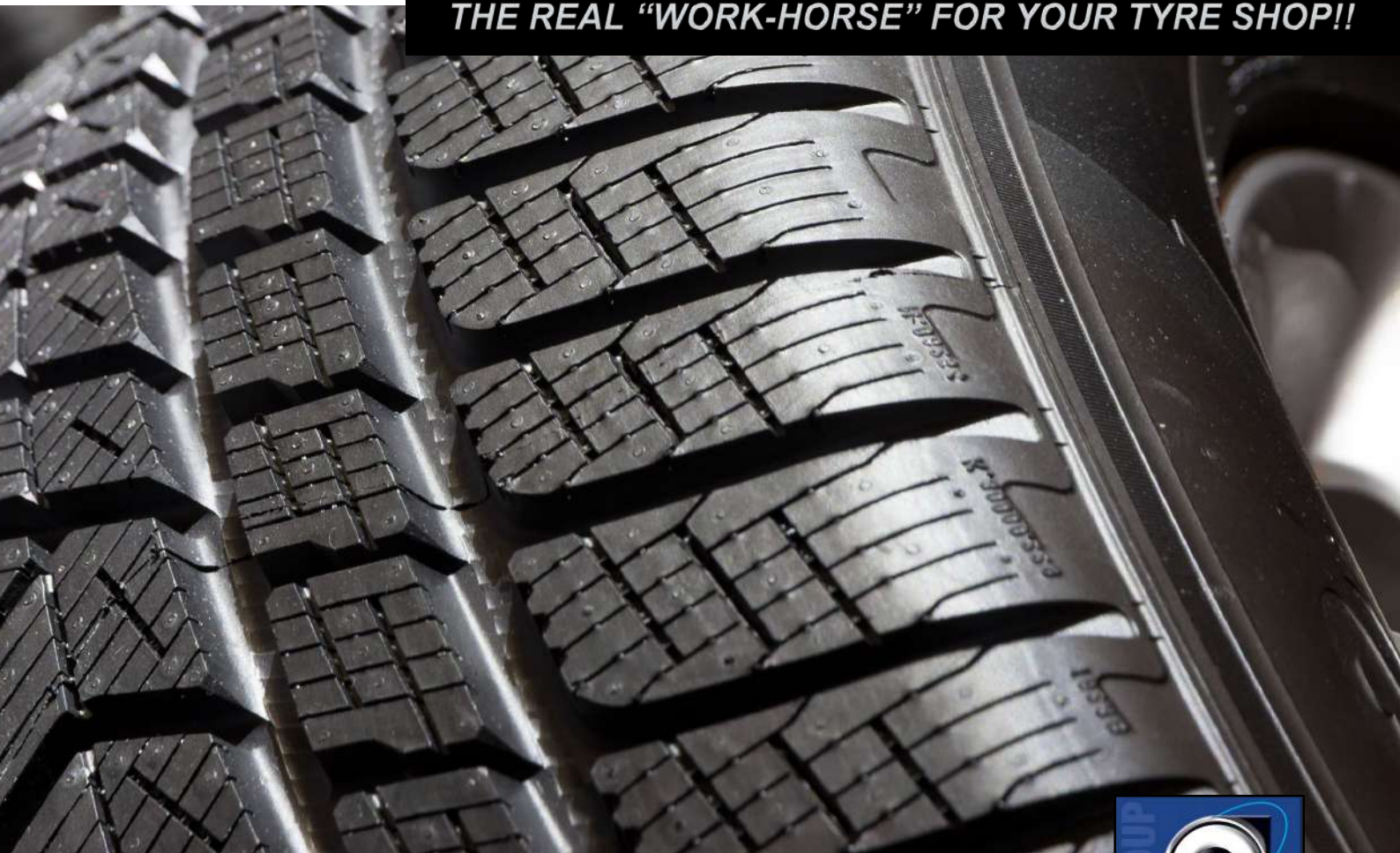
THE "HARD DUTY" LINE



GIULIANO

AUTOMOTIVE EQUIPMENT

THE REAL "WORK-HORSE" FOR YOUR TYRE SHOP!!



WWW.GIULIANO-AUTOMOTIVE.COM



NEW

MAXI PRO GT



RACING SEMI-AUTOMATIC SWING ARM TYRE CHANGER

Suitable for **PRESS ARM** to ease mounting operations of low profiled and UHP tyres (optional):



MOTOINVERTER
Faster, more accurate and reliable drive for your tyre changer.



Discover on our website!

100% Made in Italy



PRESS ARM (optional)

Bead pressing pad
Bead lifting disk



Fitting head designed for both standard and low profiled tyre applications



Available in 3ph-2 speed, 1ph-2 speed (inverter) and 1ph - 1 speed version

- Vertical tower with built-in air tank
- Extra-high tower for extra wide tyres, swinging horizontal arm with Ø 41 mm operating arm

Suitable for **HELP Maxi Pro** and **PRESS ARM Maxi Pro** (optional):

Help and PRESS ARM (optional)

Bead pressing pad
Bead lifting disk



Roller tool

- Bead seating jet blast from jaws and Tyre inflation by pedal (standard)
- Tabletop thickness 14 mm w/adjust. jaws
- Reinforced Chassis and Tower
- "Easy Access" extractable pedal box for quick service

Bead breaker double effect Cylinder ø 200 mm.

5 YEAR WARRANTY ON GEARBOX



220V-1ph Inverter

Available in:
● Blue Trim
● Black Trim
● Red Trim

STANDARD FEATURES

Rim clamping from outside	10" - 24" *
Rim clamping from inside	12" - 26" *
Max. tyre diameter	1100 mm (43")
Max. tyre width	390 mm (15")
Bead breaker cylinder force at 10 Bar	30800 N
Operating pressure	10 Bar (145 Psi)
Power supply	220V - 1ph - Inverter (STND) 400V - 3ph, 2 speed, 110V - 1ph (OPT)
Motor power	0,75 kW (2 speed)
Rotation speed	7 - 16 rpm
Pre-set tyre inflating pressure	3,5 Bar (50 Psi)
Net weight	340 kg
Max. overall dimensions	1390 x 1310 x 2160 mm

* By adjustable jaws

STANDARD ACCESSORIES



EXTENSIVE SELECTION OF STANDARD ACCESSORIES

Bead lifting lever ● Lube paste bucket and Brush ● Plastic protectors for mounting/demounting tool ● 2 Protectors for bead breaker shovel ● Jaw protectors for alloy rims ● Lubricator + Pressure regulator ● Bucket support ● Mounting Head



THE HARD DUTY LINE

THE REAL "WORK-HORSE" FOR YOUR TYRE SHOP!!

NEW

MAXI PRO CP



RACING SEMI-AUTOMATIC SWING ARM CENTER POST TYRE CHANGER

Suitable for **PRESS ARM** to ease mounting operations of low profiled and UHP tyres (optional):



MOTOINVERTER
Faster, more accurate and reliable drive for your tyre changer.



Discover on [our website!](#)

100% Made in Italy



PRESS ARM (optional)

Available in 3ph-2 speed, 1ph-2 speed (inverter) and 1ph - 1 speed version

Bead pressing pad

Bead lifting disk

Fitting head designed for both standard and low profiled tyre applications

Vertical tower with built-in air tank

Extra-high tower for extra wide tyres, swinging horizontal arm with $\varnothing 41$ mm operating arm



Suitable for **HELP Maxi Pro** and **PRESS ARM Maxi Pro** (optional):

Help and PRESS ARM (optional)

Bead pressing pad

Bead lifting disk

Roller tool

Manual **Press/Twist** clamping device

Tyre inflation by pedal (standard)

Reinforced **Chassis** and Tower

"Easy Access" extractable pedal box for quick service



Suitable for Tubeless tyre bead seating system (optional)



220V-1ph Inverter

Available in:
● Blue Trim
● Black Trim
● Red Trim

Bead breaker double effect
Cylinder $\varnothing 200$ mm.

5 YEAR WARRANTY ON GEARBOX



STANDARD FEATURES

Rim clamping range	10" - 26"
Max. tyre diameter	1100 mm (43")
Max. tyre width	390 mm (15")
Bead breaker cylinder force at 10 Bar	30800 N
Operating pressure	10 Bar (145 Psi)
Power supply	220V - 1ph - Inverter (STND) 400V - 3ph, 2 speed, 110V - 1ph (OPT)
Motor power	0,75 kW (2 speed)
Rotation speed	7 - 16 rpm
Pre-set tyre inflating pressure	3,5 Bar (50 Psi)
Net weight	298 kg
Max. overall dimensions	1390 x 1310 x 2160 mm

STANDARD ACCESSORIES



EXTENSIVE SELECTION OF STANDARD ACCESSORIES

Bead lifting lever ● Lube paste bucket and Brush ● Plastic protectors for mounting/demounting tool ● 2 Protectors for bead breaker shovel ● Lubricator + Pressure regulator ● Bucket support ● Mounting Head ● Press/Twist clamping device ● 2 Plastic protections for clamping device ● 2 Rubber protections for clamping chuck



5 YEAR WARRANTY ON GEARBOX

S228



RACING SUPER-AUTOMATIC TILT BACK TYRE CHANGER



✔ Suitable for Tubeless tyre bead seating system (optional)



MOTOINVERTER
Faster, more accurate and reliable drive for your tyre changer.

100% Made in Italy



✔ Robotic pipe for operating arm positioning/lock

✔ Reinforced Chassis and Tower

✔ Tyre inflation by pedal (standard)

✔ Fitting head designed for both standard and low profiled tyre applications



✔ Suitable for **Patented QX Leverless** mounting device for low profiled and UHP tyres (optional)

✔ Tabletop thickness 14 mm

✔ A very practical **Wheel Lifter** reduces effort and increases productivity (optional).

✔ "Easy Access" extractable pedal box for quick service

✔ Double rotation speed by pedal



Available in:
● Blue Trim
● Black Trim
● Red Trim

Available in 3ph-2 speed, 1ph-2 speed (inverter) and 1ph - 1 speed version

S228 PRO



HP4
(standard)

Technical specs
(see S228)
Dimensions
1590x1890x2040 mm
Net weight 350 kg

✔ Tilting tower, sliding horizontal arm with \varnothing 41 mm operating arm



✔ Patented **PO SYSTEM** (standard) automatically moves the bead breaker shovel back to the starting position, after its penetration.

✔ Bead breaker double effect Cylinder \varnothing 200 mm.

✔ Adjustable bead breaker shovel stroke.



STANDARD FEATURES

Rim clamping from outside	10" - 24" *
Rim clamping from inside	12" - 26" *
Max. tyre diameter	1100 mm (43")
Max. tyre width	415 mm (16")
Bead breaker cylinder force at 10 Bar	30800 N
Operating pressure	10 bar (145 Psi)
Power supply	400V-3ph-2 speed 220V-1ph/220V-1ph-2 speed
Motor power	0,8 / 1,1 kW (3 ph)
Rotation speed	7 - 14 rpm
Pre-set tyre inflating pressure	3,5 bar (50 Psi)
Net weight	265 kg
Max. overall dimensions	1170x1890x2040 mm

* By adjustable jaws

STANDARD ACCESSORIES



EXTENSIVE SELECTION OF STANDARD ACCESSORIES

Bead lifting lever ● Lube paste bucket and Brush ● Plastic protectors for mounting/demounting tool ● 2 Protectors for bead breaker shovel ● Jaw protectors for alloy rims ● Lubricator + Pressure regulator ● Bucket support



THE HARD DUTY LINE

THE REAL "WORK-HORSE" FOR YOUR TYRE SHOP!!

NEW

SX228 PRO



RACING SUPER-AUTOMATIC TILT BACK TYRE CHANGER WITH DUAL ASSIST ARM AND POWER X



Lightbulb icon Suitable for Tubeless tyre bead seating system (optional)



MOTOINVERTER

Faster, more accurate and reliable drive for your tyre changer.

Available in 3ph-2 speed, 1ph-2 speed (inverter) and 1ph - 1 speed version



Discover on our website!



5 YEAR WARRANTY ON POWERX
5 YEAR WARRANTY ON GEARBOX

100% Made in Italy



Checkmark icon Robotic pipe for operating arm positioning/lock

Checkmark icon Reinforced Chassis and Tower

Checkmark icon Tyre inflation by pedal (standard)

Checkmark icon Fitting head designed for both standard and low profiled tyre applications

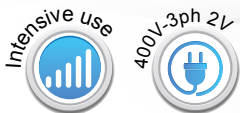
Checkmark icon Tools Storage Box (standard)

Lightbulb icon **POWER X** grants double (uniform) clamping power on jaws, and an almost **endless durability** and **reliability** of your turntable!!!

Checkmark icon Tabletop thickness 14 mm w/**POWER X** four cylinders clamping system [**Giuliano Patent**].

Lightbulb icon A very practical **Wheel Lifter** reduces effort and increases productivity (optional).

Checkmark icon Double rotation speed by pedal



Checkmark icon "Easy Access" extractable pedal box for quick service

Checkmark icon Tilting tower, sliding horizontal arm with \varnothing 41 mm operating arm

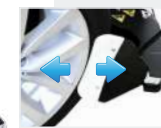


Available in:
● Blue Trim
● Black Trim
● Red Trim

Lightbulb icon **HP4** Additional auxiliary helper system (standard) provides a valuable support in mounting/demounting Run Flat, UHP and low profiled tyres.



Additional tilting roller tool for lower bead with an anti-collision joint.



Lightbulb icon Patented **PO SYSTEM** (standard) automatically moves the bead breaker shovel back to the starting position, after its penetration.

Checkmark icon Bead breaker double effect Cylinder \varnothing 200 mm.

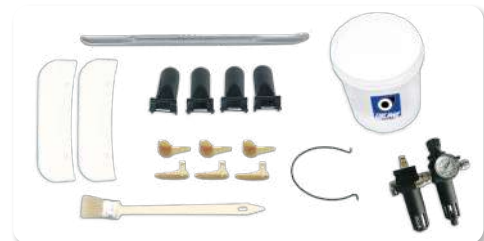
Checkmark icon Adjustable bead breaker shovel stroke.



STANDARD FEATURES

Rim clamping from outside	10" - 27"
Rim clamping from inside	12" - 29"
Max. tyre diameter	1100 mm (43")
Max. tyre width	415 mm (16")
Bead breaker cylinder force at 10 Bar	30800 N
Operating pressure	10 bar (145 Psi)
Power supply	400V-3ph-2 speed 220V-1ph/220V-1ph-2 speed
Motor power	0,8 / 1,1 kW (3 ph)
Rotation speed	7 - 14 rpm
Pre-set tyre inflating pressure	3,5 bar (50 Psi)
Net weight	360 kg
Max. overall dimensions	1590x1930x2040 mm

STANDARD ACCESSORIES



EXTENSIVE SELECTION OF STANDARD ACCESSORIES

Bead lifting lever ● Lube paste bucket and Brush ● Plastic protectors for mounting/demounting tool ● 2 Protectors for bead breaker shovel ● Jaw protectors for alloy rims ● Lubricator + Pressure regulator ● Bucket support



THE HARD DUTY LINE

THE REAL "WORK-HORSE" FOR YOUR TYRE SHOP!!

NEW

SX228 PRO LNL



RACING SUPER-AUTOMATIC LEVER - NO LEVER TILT BACK TYRE CHANGER WITH DUAL ASSIST ARM AND POWER X



Suitable for Tubeless tyre bead seating system (optional)



MOTOINVERTER
Faster, more accurate and reliable drive for your tyre changer.

Available in 3ph-2 speed, 1ph-2 speed (inverter) and 1ph - 1 speed version



COMING SOON...



Discover on our website!



5 YEAR WARRANTY ON POWERX
5 YEAR WARRANTY ON GEARBOX

100% Made in Italy



Robotic pipe for operating arm positioning/lock

Tools Storage Box (standard)

Tilting tower, sliding horizontal arm with \varnothing 41 mm operating arm

Tyre inflation by pedal (standard)

Lever-No-Lever tyre mounting / demounting system [Giuliano Patent], (standard).

POWER X grants double (uniform) clamping power on jaws, and an almost **endless durability** and **reliability** of your turntable!!!

Tabletop thickness 14 mm with **POWER X** four cylinders clamping system [Giuliano Patent].

Reinforced Chassis and Tower

"Easy Access" extractable pedal box for quick service

Double rotation speed by pedal



Available in:

- Blue Trim
- Black Trim
- Red Trim

HP4 DUAL ASSIST ARM (standard):

- Bead Pressing Roller
- Bead Lifting Roller
- Bead Pressing Pad



LNL SYSTEM [Patented] can work either with or without bead lifting lever



"NO LEVER" MODE



"LEVER" MODE

Control lever to manage movements of the tool.

"LEVER" & "NO LEVER" Mode control handle



Patented **PO SYSTEM** (standard) automatically moves the bead breaker shovel back to the starting position, after its penetration.

Bead breaker **double effect Cylinder** \varnothing 200 mm.

Adjustable bead breaker shovel stroke.



STANDARD FEATURES

Rim clamping from outside	10" - 27"
Rim clamping from inside	12" - 29"
Max. tyre diameter	1100 mm (43")
Max. tyre width	415 mm (16")
Bead breaker cylinder force at 10 Bar	30800 N
Operating pressure	10 bar (145 Psi)
Power supply	400V-3ph-2 speed 220V-1ph/220V-1ph-2 speed
Motor power	0,8 / 1,1 kW (3 ph)
Rotation speed	7 - 14 rpm
Pre-set tyre inflating pressure	3,5 bar (50 Psi)
Net weight	380 kg
Max. overall dimensions	1590x1930x2160 mm

STANDARD ACCESSORIES



EXTENSIVE SELECTION OF STANDARD ACCESSORIES

Bead lifting lever • Lube paste bucket and Brush • Plastic protectors for LNL mounting/demounting tool • 2 Protectors for bead breaker shovel • Jaw protectors for alloy rims • Lubricator + Pressure regulator • Bucket support



NEW

SX228 PRO DUO



RACING SUPER-AUTOMATIC TILT BACK TYRE CHANGER WITH COMBINED TWO ASSIST ARMS AND POWER X



Lightbulb icon Suitable for Tubeless tyre bead seating system (optional)



MOTOINVERTER
Faster, more accurate and reliable drive for your tyre changer.

Available in 3ph-2 speed, 1ph-2 speed (inverter) and 1ph - 1 speed version



COMING SOON...

Discover on our website!



5 YEAR WARRANTY ON POWER X
5 YEAR WARRANTY ON GEARBOX

100% Made in Italy



Checkmark icon Robotic pipe for operating arm positioning/lock

Checkmark icon Tilting tower, sliding horizontal arm with $\varnothing 41$ mm operating arm

Checkmark icon Tyre inflation by pedal (standard)



Available in:
● Blue Trim
● Black Trim
● Red Trim

Checkmark icon Reinforced Chassis and Tower

Checkmark icon Fitting head designed for both standard and low profiled tyre applications

Checkmark icon Tabletop thickness 14 mm with **POWER X** four cylinders clamping system [Giuliano Patent].

Lightbulb icon Equipped with **Help** and **Press Arm** powerful pneumatic helper systems, to enhance tyre changer's performance and provide a valuable support in mounting/demounting most difficult tyre applications in the market, such as Run Flat, UHP and low profiled tyres.

Lightbulb icon **POWER X** grants double (uniform) clamping power on jaws, and an almost **endless durability** and **reliability** of your turntable!!!

Lightbulb icon Patented **PO SYSTEM** (standard) automatically moves the bead breaker shovel back to the starting position, after its penetration.



Checkmark icon "Easy Access" extractable pedal box for quick service

Checkmark icon Bead breaker **double effect Cylinder** $\varnothing 200$ mm.



Lightbulb icon A very practical **Wheel Lifter** reduces effort and increases productivity (optional).

Checkmark icon Double rotation speed by pedal

Checkmark icon Adjustable bead breaker shovel stroke.



STANDARD FEATURES

Rim clamping from outside	10" - 27"
Rim clamping from inside	12" - 29"
Max. tyre diameter	1100 mm (43")
Max. tyre width	415 mm (16")
Bead breaker cylinder force at 10 Bar	30800 N
Operating pressure	10 bar (145 Psi)
Power supply	400V-3ph-2 speed 220V-1ph/220V-1ph-2 speed
Motor power	0,8 / 1,1 kW (3 ph)
Rotation speed	7 - 14 rpm
Pre-set tyre inflating pressure	3,5 bar (50 Psi)
Net weight	390 kg
Max. overall dimensions	1950x1930x2040 mm

STANDARD ACCESSORIES



EXTENSIVE SELECTION OF STANDARD ACCESSORIES

Bead lifting lever ● Lube paste bucket and Brush ● Plastic protectors for mounting/demounting tool ● 2 Protectors for bead breaker shovel ● Jaw protectors for alloy rims ● Lubricator + Pressure regulator ● Bucket support



NEW

SX228 PRO DUO LNL



RACING SUPER-AUTOMATIC LEVER - NO LEVER TILT BACK TYRE CHANGER WITH COMBINED TWO ASSIST ARMS AND POWER X



Suitable for Tubeless tyre bead seating system (optional)



MOTOINVERTER
Faster, more accurate and reliable drive for your tyre changer.



Discover on our website!



5 YEAR WARRANTY ON POWER X
5 YEAR WARRANTY ON GEARBOX

100% Made in Italy



Robotic pipe for operating arm positioning/lock

Reinforced Chassis and Tower

Available in 3ph-2 speed, 1ph-2 speed (inverter) and 1ph - 1 speed version

Tilting tower, sliding horizontal arm with $\varnothing 41$ mm operating arm

Available in:

- Blue Trim
- Black Trim
- Red Trim

Equipped with **Help** and **Press Arm** powerful pneumatic helper systems, to enhance tyre changer's performance and provide a valuable support in mounting/demounting most difficult tyre applications in the market, such as Run Flat, UHP and low profiled tyres.



LNL SYSTEM
[Patented] can work either with or without bead lifting lever

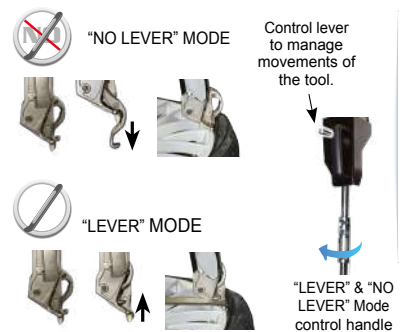
Lever-No-Lever tyre mounting/demounting system [Giuliano Patent], (standard).

Tabletop thickness 14 mm with **POWER X** four cylinders clamping system [Giuliano Patent].

POWER X grants double (uniform) clamping power on jaws, and an almost **endless** durability and reliability of your turntable!!!

"Easy Access" extractable pedal box for quick service

A very practical **Wheel Lifter** reduces effort and increases productivity (optional).



Patented **PO SYSTEM** (standard) automatically moves the bead breaker shovel back to the starting position, after its penetration.



Bead breaker **double effect** Cylinder $\varnothing 200$ mm.

Adjustable bead breaker shovel stroke.



Double rotation speed by pedal

Tyre inflation by pedal (standard)

STANDARD FEATURES

Rim clamping from outside	10" - 27"
Rim clamping from inside	12" - 29"
Max. tyre diameter	1100 mm (43")
Max. tyre width	415 mm (16")
Bead breaker cylinder force at 10 Bar	30800 N
Operating pressure	10 bar (145 Psi)
Power supply	400V-3ph-2 speed 220V-1ph/220V-1ph-2 speed
Motor power	0,8 / 1,1 kW (3 ph)
Rotation speed	7 - 14 rpm
Pre-set tyre inflating pressure	3,5 bar (50 Psi)
Net weight	410 kg
Max. overall dimensions	1950x1930x2160 mm

STANDARD ACCESSORIES



EXTENSIVE SELECTION OF STANDARD ACCESSORIES

Bead lifting lever • Lube paste bucket and Brush • Plastic protectors for mounting/demounting tool • 2 Protectors for bead breaker shovel • Jaw protectors for alloy rims • Lubricator + Pressure regulator • Bucket support